

# Max Munich Sport #1



Oil Per Board: **40 mu**      Oil Pattern Distance: **40 Feet**      Volume Oil Total: **22.8 mL**      Total Boards Crossed: **570 Boards**  
 Forward Oil Total: **11.52 mL**      Reverse Oil Total: **11.28 mL**  
 Forward Boards Crossed: **288 Boards**      Reverse Boards Crossed: **282 Boards**

	Start	Stop	Loads	Speed	Crossed	Start	End	Feet	T.Oil
1	2L	2R	2	18	74	0.0	2.5	2.5	2960
2	7L	7R	1	18	27	2.5	5.0	2.5	1080
3	9L	9R	2	18	46	5.0	10.1	5.1	1840
4	10L	10R	4	18	84	10.1	20.3	10.2	3360
5	11L	11R	3	22	57	20.3	29.6	9.3	2280
6	2L	2R	0	22	0	29.6	40.0	10.4	0

< < > > Forward Reverse More Info

	Start	Stop	Loads	Speed	Crossed	Start	End	Feet	T.Oil
1	2L	2R	0	30	0	40.0	34.0	-6.0	0
2	12L	12R	1	22	17	34.0	30.9	-3.1	680
3	11L	11R	2	18	38	30.9	25.8	-5.1	1520
4	10L	10R	3	18	63	25.8	18.2	-7.6	2520
5	9L	9R	2	14	46	18.2	14.3	-3.9	1840
6	8L	8R	2	14	50	14.3	10.4	-3.9	2000
7	5L	5R	1	14	31	10.4	8.5	-1.9	1240
8	2L	2R	1	14	37	8.5	6.6	-1.9	1480
9	2L	2R	0	10	0	6.6	0.0	-6.6	0

< < > > Forward Reverse More Info

Report Date

5/15/2018

Conditioner:

Type In or Select One

TransferType:

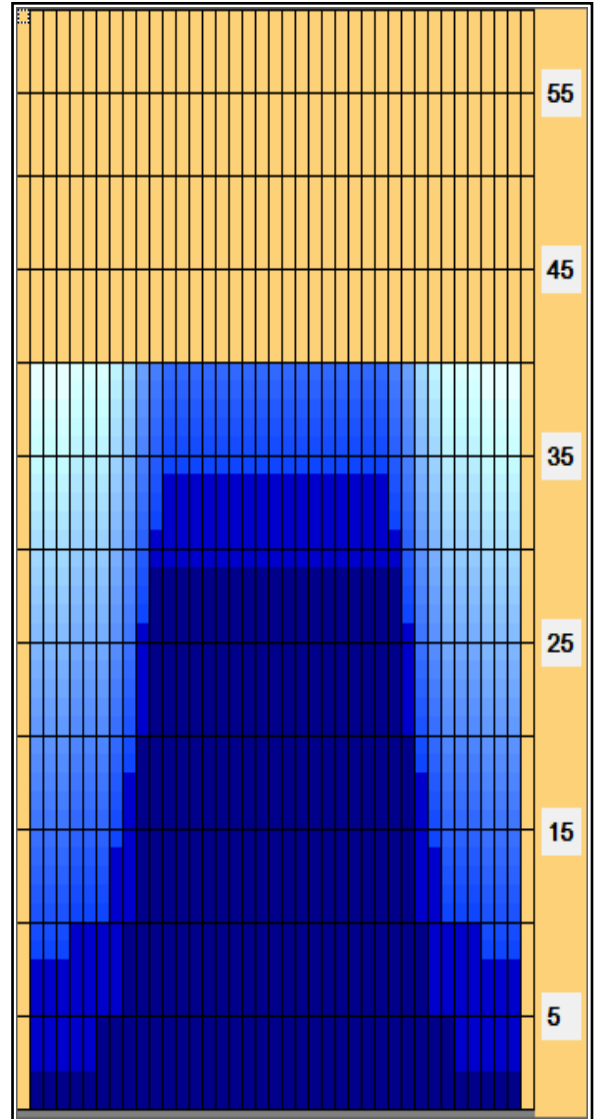
Type In or Select One

Forward Oil

Reverse Oil

Combined Oil

Buff Area



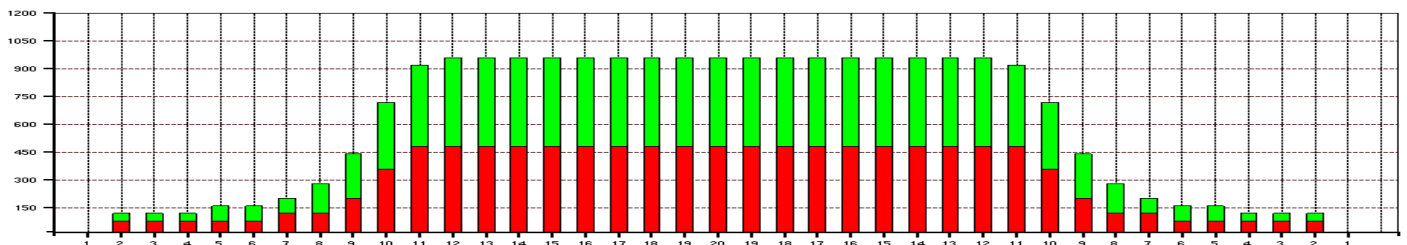
Arrow Zone Ratios

Item	2-6L:16L-20	6-10L:16:-20	11-15L:16L-20	16L-20:20-16R	16L-20:20-16R	20-16R:15-11R	20-16R:10-6R	20-16R:5-2R
ul Arrow	130	360	952	960	960	952	360	130
Zone Ratio	7.38	2.67	1.01	1	1	1.01	2.67	7.38

Track Zone Ratios

Item	3L-7L:18L-18R	8L-12L:18L-18R	13L-17L:18L-18R	18L-18R:17R-13R	18L-18R:12R-8R	18L-18R:7R-3R
Description	Outside Track:Middle	Middle Track:Middle	Inside Track:Middle	Middle: Inside Track	Middle:Middle Track	Middle:Outside Track
Track Zone Ratio	6.32	1.45	1	1	1.45	6.32

Forward Reverse



# Max Munich Sport #1



---

Oil Per Board: 40 mu	Oil Pattern Distance: 40 Feet	Volume Oil Total: 22.8 mL	Total Boards Crossed: 570 Boards
Forward Oil Total:	11.52 mL	Reverse Oil Total:	11.28 mL
Forward Boards Crossed:	288 Boards	Reverse Boards Crossed:	282 Boards

---

**Name of Event**  
**Dates of Event**  
**Location of Event**

The following are the details regarding the lanes and conditioning:

Number of Lanes:  
Surface:  
Pinsetters:  
Conditioner:  
Cleaner:  
Lane Machine:

Enter here additional specific information about the patterns used in the tournament, conditioning times, frequency of conditionings etc.

Length of patterns:  
See graphs for overhead view on conditioning patterns and volume of oil.

Enter any additional tournament information here, number of players, tournament type, sport rules, format etc.

Technician Name, Technical Delegate  
Name of Event